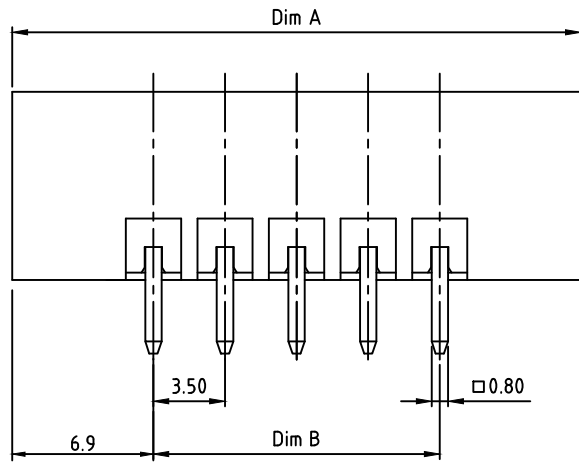
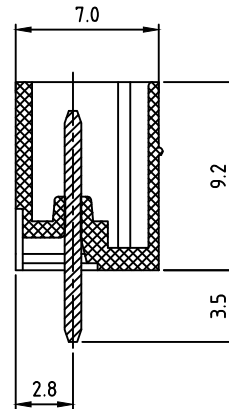
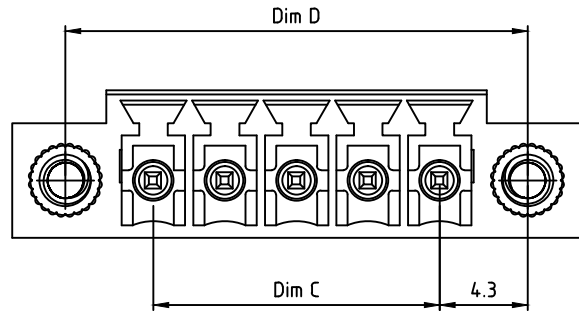
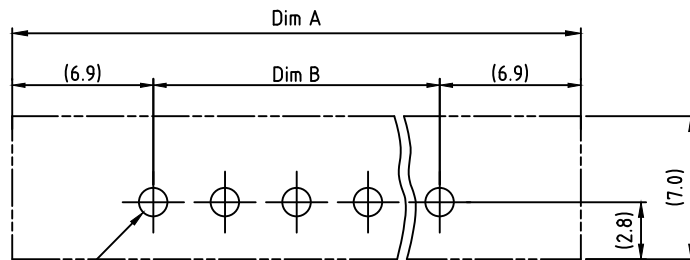


# SPECIFICATIONS

Current Rating: 10/10.5 Amps  
 Voltage Rating: 300V  
 Dielectric withstanding: 1.6KV/2.5KV  
 Operating Temperature: -40°C~+115°C  
 Soldering Temperature: 250°C ±10°C /5Sec  
 Contact Material: Copper with Tin Plating  
 Insulator Material: Thermoplastic UL 94V-0  
 Flange Nut: Brass, M2.5  
 Safety Approval: cULus VDE



N= Number of concats



RECOMMENDED PCB LAYOUT

Dimensions	
A	$(N-1) \times 3.5 \pm 13.8$
B	$(N-1) \times 3.5$
C	$(N-1) \times 3.5$
D	$(N-1) \times 3.5 \pm 8.6$

Poles	Tolerance
2P-6P	±0.15
7P-12P	±0.20
13P-16P	±0.25
17P-24P	±0.30

RPLJ-XXAEXJ-FG

02: 2Pos  
 03: 2Pos  
 04: 2Pos  
 "" ""  
 24: 24Pos

FG: RoHS Compliant  
(Lead <4% in Copper Alloy)

J: Black(RAL9005)  
 B: Red(RAL3001/D)  
 C: Orange(RAL2011/P)  
 D: Yellow(RAL1018/A)  
 E: Green(RAL6018/T)  
 F: Blue(RAL5015/A)  
 H: Grey(RAL7035/D)

APTOS Technology CONFIDENTIAL  
 This document, and all information it contains, are the confidential, proprietary property of APTOS Technology. Disclosure, duplication or distribution of this document, or any information it contains, in whole or part, without prior written permission from APTOS Technology is strictly prohibited

GENERAL TOLERANCE UNLESS OTHERWISE SPECIFIED	
XXX. ± X	.XX ± 0.10
XX. ± X	.XXX ± X
X. ± 0.50	X' ± 1'
.X ± 0.30	.X' ± 1'

REV. A	DRAWN	10/22/09
DATE 10/22/09	CHECKED	
SCALE 4:1	APPROVED	
UNIT mm		SIZE A4

**AP APTOS TECHNOLOGY**

RPLJ Series

3.50mm Terminal Blk Header w/Flange

PRODUCT NO. RPLJ-XXAEXJ-FG

FILE NAME: RPLJ-XXAEXJ-FG LF APD.DWG